





# SMART STORAGE SOLUTIONS SOLUCIONES DE ALMACENAJE INTELIGENTE



SILOS AND STORAGE  
PLANTS

SILOS Y PLANTAS DE  
ALMACENAJE

**SILOS CORDOBA** starts its operations in 1975, in Cordoba, Spain. The founder, Juan Lopez Lietor, commenced then a new business venture aimed at fulfilling the needs of the stockbreeding market. Silos Cordoba continued growing to respond the market demands and today the company offers a wide range of products and services that include the conception, planning, design and assembly of agribusiness facilities; the manufacturing of storage silos, and the manufacturing of grain conveying and handling systems.



## ■ PRODUCTS AND SERVICES ■

- Grain storage silos
- Truck load silos
- Silo accessories
- Conveying systems
- Turn key projects
- Feed manufacturing plants
- Biodiesel facilities

EXPERIENCIA

SMART STORAGE SOLUTIONS / SOLUCIONES DE ALMACENAJE INTELIGENTE



# SMART STORAGE SOLUTIONS SOLUCIONES DE ALMACENAJE INTELIGENTE



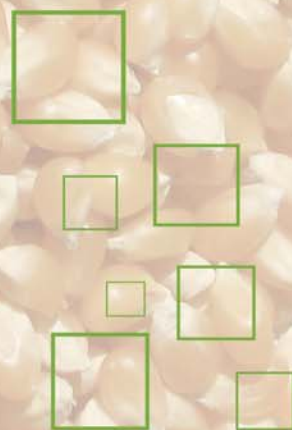
## SILOS CORDOBA industrial and agricultural facilities

SILOS AND STORAGE PLANTS  
SILOS Y PLANTAS DE ALMACENAJE

**SILOS CORDOBA** is responsible for the engineering, development and assembly of facilities for industrial and agricultural use. The extensive experience of this division is a guarantee of our quality, expertise and competitiveness.

**SILOS CORDOBA** offers an integral service that spans the identification of the needs, the definition of possible solutions, the conception and planning of the project, and its implementation.

We have a multidisciplinary team of specialized technicians and engineers that study in a personalized way our clients needs and manage the implementation of the projects.



SMART STORAGE SOLUTIONS SOLUCIONES DE ALMACENAJE INTELIGENTE  
SOLUCIONES DE ALMACENAJE INTELIGENTE SMART STORAGE SOLUTIONS



# SMART STORAGE SOLUTIONS SOLUCIONES DE ALMACENAJE INTELIGENTE



SILOS AND STORAGE  
PLANTS

SILOS Y PLANTAS DE  
ALMACENAJE

## Design and manufacturing of silos

**SILOS CORDOBA** develops custom made solutions anywhere in the world. The galvanized sheet metal silos are today the best alternative for grain storage thanks to its versatility, easy assembly, hygienic handling and low cost storage.

Considering your needs, we design your silos using the most up-to-date technological means, employing the best quality and in compliance with the current european laws.



SMART STORAGE SOLUTIONS SOLUCIONES DE ALMACENAJE INTELIGENTE SMART STORAGE SOLUTIONS





# SMART STORAGE SOLUTIONS SOLUCIONES DE ALMACENAJE INTELIGENTE



SILOS AND STORAGE  
PLANTS

SILOS Y PLANTAS DE  
ALMACENAJE



We are experts in the design and assembly of silos and facilities. We have the most modern manufacturing technologies, which allows us to perform with maximum flexibility. We control all the steps of the development, manufacturing and assembly processes, as well as the materials we employ, to assure the quality up to delivery.



SMART STORAGE SOLUTIONS / SOLUCIONES DE ALMACENAJE INTELIGENTE





# SMART STORAGE SOLUTIONS SOLUCIONES DE ALMACENAJE INTELIGENTE



## FLAT SILOS

diameter	from	to(m <sup>3</sup> )
4,58	102	383
5,35	140	524
6,11	218	686
6,88	279	872
7,64	347	1079
8,40	424	1308
9,17	661	1564
9,93	782	1850
10,70	913	2143
11,46	1054	2465
12,22	1208	2812
12,99	1374	3186
13,75	1551	3582
14,51	1739	4001
15,28	1942	4450
16,04	2155	4919
16,81	2383	5419
17,57	2621	5938
18,33	2872	6482
19,10	3140	7059
19,86	3428	7676
20,63	3712	8284
21,39	4028	8960
22,92	4673	10317
23,68	5035	11083
24,45	5387	11809
27,50	6989	15114
30,55	8840	18867
32,08	9866	20923
36,66	20570	27789
41,25	26634	35774

## HOPPER SILOS 45°

diameter	from	to(m <sup>3</sup> )
4,58	95	320
5,35	134	442
6,11	181	582
6,88	237	745
7,64	301	928
8,40	375	1133
9,17	460	1364
10,70	663	1893

## HOPPER SILOS 60°

diameter	from	to(m <sup>3</sup> )
1,85	5	10
2,55	10	28
2,80	13	34
3,05	25	45
3,50	31	63
4,58	100	326
5,35	143	425
6,88	255	692

SILOS AND STORAGE PLANTS

SILOS Y PLANTAS DE ALMACENAJE



# SMART STORAGE SOLUTIONS

## SOLUCIONES DE ALMACENAJE INTELIGENTE

SILOS AND STORAGE  
PLANTS

SILOS Y PLANTAS DE  
ALMACENAJE

### Flat silos

- Silos manufactured with galvanized steel S350GD of high elastic tolerance and with Z600 minimum coating equivalent to 600 g/m<sup>2</sup> of zinc.
- 8,8 quality dichromate high tensile bolts in all of our product range.
- Washers with neoprene to ensure a waterproof seal.
- Galvanized reinforced exteriors, regardless of thickness, that provide excellent anti-corrosion qualities.
- Galvanized cross section roof structure on models with a diameter superior to 12,22 meters.
- Our method of calculating thickness is more demanding than that established by standard EUROCODIGO 1.
- Stairs and platforms comply with regulation UNE-EN ISO 14122.







# SMART STORAGE SOLUTIONS

## SOLUCIONES DE ALMACENAJE INTELIGENTE

SILOS AND STORAGE PLANTS

SILOS Y PLANTAS DE ALMACENAJE

MOD. 4,58/..				MOD. 5,35/..				MOD. 6,11/..				MOD. 6,88/..			
mod.	m3	Hv	H	mod.	m3	Hv	H	mod.	m3	Hv	H	mod.	m3	Hv	H
4,58/5	102	5,71	7,02	5,35/5	140	5,71	7,31	6,11/6	218	6,86	8,63	6,88/6	279	6,86	8,94
4,58/6	120	6,86	8,13	5,35/6	165	6,86	8,46	6,11/7	251	8,01	9,77	6,88/7	321	8,01	10,08
4,58/7	139	8,01	9,27	5,35/7	191	8,01	9,60	6,11/8	285	9,15	10,92	6,88/8	364	9,15	11,22
4,58/8	158	9,15	10,42	5,35/8	217	9,15	10,75	6,11/9	318	10,30	12,06	6,88/9	406	10,30	12,37
4,58/9	176	10,30	11,56	5,35/9	242	10,30	11,89	6,11/10	351	11,44	13,20	6,88/10	449	11,44	13,51
4,58/10	195	11,44	12,71	5,35/10	268	11,44	13,03	6,11/11	385	12,58	14,35	6,88/11	491	12,58	14,66
4,58/11	214	12,58	13,85	5,35/11	294	12,58	14,18	6,11/12	418	13,73	15,49	6,88/12	533	13,73	15,80
4,58/12	233	13,73	14,99	5,35/12	319	13,73	15,32	6,11/13	452	14,87	16,64	6,88/13	576	14,87	16,94
4,58/13	251	14,87	16,14	5,35/13	345	14,87	16,47	6,11/14	485	16,02	17,78	6,88/14	618	16,02	18,09
4,58/14	270	16,02	17,28	5,35/14	370	16,02	17,61	6,11/15	519	17,16	18,92	6,88/15	660	17,16	19,23
4,58/15	289	17,16	18,43	5,35/15	396	17,16	18,75	6,11/16	552	18,30	20,07	6,88/16	703	18,30	20,38
4,58/16	308	18,30	19,57	5,35/16	422	18,30	19,90	6,11/17	585	19,45	21,21	6,88/17	745	19,45	21,52
4,58/17	327	19,45	20,71	5,35/17	447	19,45	21,04	6,11/18	619	20,59	22,36	6,88/18	788	20,59	22,66
4,58/18	345	20,59	21,86	5,35/18	473	20,59	22,19	6,11/19	652	21,74	23,50	6,88/19	830	21,74	23,81
4,58/19	364	21,74	23,00	5,35/19	499	21,74	23,33	6,11/20	686	22,88	24,64	6,88/20	872	22,88	24,95
4,58/20	383	22,88	24,15	5,35/20	524	22,88	24,47								

MOD. 7,64/..				MOD. 8,40/..				MOD. 9,17/..				MOD. 9,93/..			
mod.	m3	Hv	H	mod.	m3	Hv	H	mod.	m3	Hv	H	mod.	m3	Hv	H
7,64/6	347	6,86	9,07	8,40/6	424	6,86	9,28	9,17/8	661	9,15	11,79	9,93/8	782	9,15	12,02
7,64/7	400	8,01	10,21	8,40/7	487	8,01	10,42	9,17/9	736	10,30	12,94	9,93/9	871	10,30	13,16
7,64/8	452	9,15	11,36	8,40/8	550	9,15	11,56	9,17/10	811	11,44	14,08	9,93/10	960	11,44	14,31
7,64/9	504	10,30	12,50	8,40/9	613	10,30	12,71	9,17/11	886	12,58	15,22	9,93/11	1049	12,58	15,45
7,64/10	556	11,44	13,65	8,40/10	677	11,44	13,85	9,17/12	962	13,73	16,37	9,93/12	1138	13,73	16,60
7,64/11	609	12,58	14,79	8,40/11	740	12,58	15,00	9,17/13	1.037	14,87	17,51	9,93/13	1227	14,87	17,74
7,64/12	661	13,73	15,93	8,40/12	803	13,73	16,14	9,17/14	1.112	16,02	18,66	9,93/14	1316	16,02	18,88
7,64/13	713	14,87	17,08	8,40/13	866	14,87	17,28	9,17/15	1.188	17,16	19,80	9,93/15	1405	17,60	20,03
7,64/14	765	16,02	18,22	8,40/14	929	16,02	18,43	9,17/16	1.263	18,30	20,94	9,93/16	1494	18,30	21,17
7,64/15	818	17,16	19,37	8,40/15	993	17,16	19,57	9,17/17	1.338	19,45	22,09	9,93/17	1583	19,45	22,32
7,64/16	870	18,30	20,51	8,40/16	1.056	18,30	20,72	9,17/18	1.413	20,59	23,23	9,93/18	1672	20,59	23,46
7,64/17	922	19,45	21,65	8,40/17	1.119	19,45	21,86	9,17/19	1.489	21,74	24,38	9,93/19	1761	21,74	24,60
7,64/18	974	20,59	22,80	8,40/18	1.182	20,59	23,00	9,17/20	1.564	22,88	25,52	9,93/20	1850	22,88	25,75
7,64/19	1.027	21,74	23,94	8,40/19	1.245	21,74	24,15								
7,64/20	1.079	22,88	25,09	8,40/20	1.308	22,88	25,29								





# SMART STORAGE SOLUTIONS

## SOLUCIONES DE ALMACENAJE INTELIGENTE

SILOS AND STORAGE PLANTS

SILOS Y PLANTAS DE ALMACENAJE

MOD. 10,70/..				MOD. 11,46/..				MOD. 12,22/..				MOD. 12,99/..			
mod.	m3	Hv	H	mod.	m3	Hv	H	mod.	m3	Hv	H	mod.	m3	Hv	H
10,70/8	913	9,15	12,27	11,46/8	1.054	9,15	12,46	12,22/8	1.208	9,15	12,68	12,99/8	1.374	9,15	12,87
10,70/9	1.015	10,30	13,41	11,46/9	1.172	10,30	13,60	12,22/9	1.341	10,30	13,82	12,99/9	1.525	10,30	14,01
10,70/10	1.118	11,44	14,55	11,46/10	1.289	11,44	14,75	12,22/10	1.475	11,44	14,97	12,99/10	1.676	11,44	15,15
10,70/11	1.220	12,58	15,70	11,46/11	1.407	12,58	15,89	12,22/11	1.609	12,58	16,11	12,99/11	1.827	12,58	16,29
10,70/12	1.323	13,73	16,84	11,46/12	1.524	13,73	17,04	12,22/12	1.742	13,73	17,26	12,99/12	1.978	13,73	17,43
10,70/13	1.425	14,87	17,99	11,46/13	1.642	14,87	18,18	12,22/13	1.876	14,87	18,40	12,99/13	2.129	14,87	18,57
10,70/14	1.528	16,02	19,13	11,46/14	1.760	16,02	19,32	12,22/14	2.010	16,02	19,54	12,99/14	2.280	16,02	19,70
10,70/15	1.630	17,16	20,27	11,46/15	1.877	17,16	20,47	12,22/15	2.143	17,16	20,69	12,99/15	2.431	17,16	20,85
10,70/16	1.733	18,30	21,42	11,46/16	1.995	18,30	21,61	12,22/16	2.277	18,30	21,83	12,99/16	2.582	18,30	21,99
10,70/17	1.835	19,45	22,56	11,46/17	2.112	19,45	22,76	12,22/17	2.411	19,45	22,98	12,99/17	2.733	19,45	23,13
10,70/18	1.938	20,59	23,71	11,46/18	2.230	20,59	23,90	12,22/18	2.545	20,59	24,12	12,99/18	2.884	20,59	24,27
10,70/19	2.040	21,74	24,85	11,46/19	2.347	21,74	25,04	12,22/19	2.678	21,74	25,26	12,99/19	3.035	21,74	25,41
10,70/20	2.143	22,88	25,99	11,46/20	2.465	22,88	26,19	12,22/20	2.812	22,88	26,41	12,99/20	3.186	22,88	26,55

MOD. 13,75/..				MOD. 14,51/..				MOD. 15,28/..				MOD. 16,04/..			
mod.	m3	Hv	H	mod.	m3	Hv	H	mod.	m3	Hv	H	mod.	m3	Hv	H
13,75/8	1.551	9,15	13,02	14,51/8	1.739	9,15	13,28	15,28/8	1.942	9,15	13,53	16,04/8	2.155	9,15	13,70
13,75/9	1.720	10,30	14,16	14,51/9	1.927	10,30	14,43	15,28/9	2.151	10,30	14,67	16,04/9	2.385	10,30	14,85
13,75/10	1.889	11,44	15,31	14,51/10	2.116	11,44	15,57	15,28/10	2.360	11,44	15,81	16,04/10	2.615	11,44	15,99
13,75/11	2.059	12,58	16,45	14,51/11	2.304	12,58	16,71	15,28/11	2.570	12,58	16,95	16,04/11	2.846	12,58	17,13
13,75/12	2.228	13,73	17,59	14,51/12	2.493	13,73	17,86	15,28/12	2.778	13,73	18,09	16,04/12	3.076	13,73	18,28
13,75/13	2.397	14,87	18,74	14,51/13	2.682	14,87	19,00	15,28/13	2.987	14,87	19,23	16,04/13	3.307	14,87	19,42
13,75/14	2.566	16,02	19,88	14,51/14	2.870	16,02	20,15	15,28/14	3.197	16,02	20,37	16,04/14	3.537	16,02	20,57
13,75/15	2.736	17,16	21,03	14,51/15	3.059	17,16	21,29	15,28/15	3.405	17,16	21,51	16,04/15	3.767	17,16	21,71
13,75/16	2.905	18,30	22,17	14,51/16	3.247	18,30	22,43	15,28/16	3.614	18,30	22,65	16,04/16	3.998	18,30	22,85
13,75/17	3.074	19,45	23,31	14,51/17	3.436	19,45	23,58	15,28/17	3.823	19,45	23,79	16,04/17	4.228	19,45	24,00
13,75/18	3.244	20,59	24,46	14,51/18	3.624	20,59	24,72	15,28/18	4.032	20,59	24,93	16,04/18	4.458	20,59	25,14
13,75/19	3.413	21,74	25,60	14,51/19	3.813	21,74	25,87	15,28/19	4.241	21,74	26,07	16,04/19	4.689	21,74	26,29
13,75/20	3.582	22,88	26,75	14,51/20	4.001	22,88	27,01	15,28/20	4.450	22,88	27,21	16,04/20	4.919	22,88	27,43



SOLUCIONES DE ALMACENAJE INTELIGENTE

INTELIGENTE SMART STORAGE SOLUTIONS



# SMART STORAGE SOLUTIONS SOLUCIONES DE ALMACENAJE INTELIGENTE

SILOS AND STORAGE  
PLANTS

SILOS Y PLANTAS DE  
ALMACENAJE



MOD. 16,81/..				MOD. 17,57/..				MOD. 18,33/..				MOD. 19,10/..			
mod.	m3	Hv	H	mod.	m3	Hv	H	mod.	m3	Hv	H	mod.	m3	Hv	H
16,81/8	2.383	9,15	13,93	17,57/8	2.621	9,15	14,15	18,33/8	2.872	9,15	14,33	19,10/8	3.140	9,15	14,56
16,81/9	2.636	10,30	15,07	17,57/9	2.898	10,30	15,29	18,33/9	3.173	10,30	15,48	19,10/9	3.466	10,30	15,70
16,81/10	2.889	11,44	16,22	17,57/10	3.174	11,44	16,43	18,33/10	3.474	11,44	16,62	19,10/10	3.793	11,44	16,85
16,81/11	3.142	12,58	17,36	17,57/11	3.450	12,58	17,58	18,33/11	3.774	12,58	17,77	19,10/11	4.120	12,58	17,99
16,81/12	3.395	13,73	18,50	17,57/12	3.727	13,73	18,72	18,33/12	4.075	13,73	18,91	19,10/12	4.446	13,73	19,13
16,81/13	3.648	14,87	19,65	17,57/13	4.003	14,87	19,87	18,33/13	4.376	14,87	20,05	19,10/13	4.773	14,87	20,28
16,81/14	3.901	16,02	20,79	17,57/14	4.280	16,02	21,01	18,33/14	4.677	16,02	21,20	19,10/14	5.099	16,02	21,42
16,81/15	4.154	17,16	21,94	17,57/15	4.556	17,16	22,15	18,33/15	4.978	17,16	22,34	19,10/15	5.426	17,16	22,57
16,81/16	4.407	18,30	23,08	17,57/16	4.832	18,30	23,30	18,33/16	5.279	18,30	23,49	19,10/16	5.753	18,30	23,71
16,81/17	4.660	19,45	24,22	17,57/17	5.109	19,45	24,44	18,33/17	5.579	19,45	24,63	19,10/17	6.079	19,45	24,85
16,81/18	4.913	20,59	25,37	17,57/18	5.385	20,59	25,59	18,33/18	5.880	20,59	25,77	19,10/18	6.406	20,59	26,00
16,81/19	5.166	21,74	26,51	17,57/19	5.662	21,74	26,73	18,33/19	6.181	21,74	26,92	19,10/19	6.733	21,74	27,14
16,81/20	5.419	22,88	27,66	17,57/20	5.938	22,88	27,87	18,33/20	6.482	22,88	28,06	19,10/20	7.059	22,88	28,29

MOD. 19,86/..				MOD. 20,63/..				MOD. 21,39/..				MOD. 22,92/..				MOD. 23,68/..			
mod.	m3	Hv	H	mod.	m3	Hv	H	mod.	m3	Hv	H	mod.	m3	Hv	H	mod.	m3	Hv	H
19,86/8	3428	9,15	14,89	20,63/8	3.712	9,15	15,08	21,39/8	4028	9,15	15,33	22,92/8	4.673	9,15	15,69	23,68/8	5035	9,15	15,99
19,86/9	3782	10,30	16,03	20,63/9	4.093	10,30	16,22	21,39/9	4439	10,30	16,47	22,92/9	5.143	10,30	16,84	23,68/9	5539	10,30	17,13
19,86/10	4136	11,44	17,18	20,63/10	4.474	11,44	17,36	21,39/10	4850	11,44	17,62	22,92/10	5.613	11,44	17,98	23,68/10	6043	11,44	18,28
19,86/11	4490	12,58	18,32	20,63/11	4.855	12,58	18,50	21,39/11	5261	12,58	18,76	22,92/11	6.084	12,58	19,12	23,68/11	6547	12,58	19,42
19,86/12	4844	13,73	19,47	20,63/12	5.236	13,73	19,64	21,39/12	5672	13,73	19,91	22,92/12	6.554	13,73	20,27	23,68/12	7051	13,73	20,57
19,86/13	5198	14,87	20,61	20,63/13	5.617	14,87	20,74	21,39/13	6083	14,87	21,05	22,92/13	7.025	14,87	21,41	23,68/13	7555	14,87	21,71
19,86/14	5552	16,02	21,75	20,63/14	5.998	16,02	21,92	21,39/14	6494	16,02	22,19	22,92/14	7.495	16,02	22,56	23,68/14	8059	16,02	22,85
19,86/15	5906	17,16	22,90	20,63/15	6.380	17,16	23,06	21,39/15	6905	17,16	23,34	22,92/15	7.965	17,16	23,70	23,68/15	8563	17,16	24,00
19,86/16	6260	18,30	24,04	20,63/16	6.760	18,30	24,20	21,39/16	7316	18,30	24,48	22,92/16	8.436	18,30	24,84	23,68/16	9067	18,30	25,14
19,86/17	6614	19,45	25,19	20,63/17	7.141	19,45	25,34	21,39/17	7727	19,45	25,63	22,92/17	8.906	19,45	25,99	23,68/17	9571	19,45	26,29
19,86/18	6968	20,59	26,33	20,63/18	7.522	20,59	26,48	21,39/18	8138	20,59	26,77	22,92/18	9.376	20,59	27,13	23,68/18	10075	20,59	27,43
19,86/19	7322	21,74	27,47	20,63/19	7.903	21,74	27,60	21,39/19	8549	21,74	27,91	22,92/19	9.847	21,74	28,28	23,68/19	10579	21,74	28,57
19,86/20	7676	22,88	28,62	20,63/20	8.284	22,88	28,76	21,39/20	8960	22,88	29,06	22,92/20	10.317	22,88	29,42	23,68/20	11083	22,88	29,72

SMART STORAGE SOLUTIONS SOLUCIONES DE ALMACENAJE INTELIGENTE  
SOLUCIONES DE ALMACENAJE INTELIGENTE SMART STORAGE SOLUTIONS

# SMART STORAGE SOLUTIONS SOLUCIONES DE ALMACENAJE INTELIGENTE

SILOS AND STORAGE PLANTS  
SILOS Y PLANTAS DE ALMACENAJE

MOD. 24,45/..				MOD. 27,50/..				MOD. 30,55/..			
mod.	m3	Hv	H	mod.	m3	Hv	H	mod.	m3	Hv	H
24,45/8	5.387	9,15	16,13	27,50/8	6.989	9,15	17,01	30,55/8	8.840	9,15	17,76
24,45/9	5.922	10,30	17,28	27,50/9	7.666	10,30	18,16	30,55/9	9.675	10,30	18,91
24,45/10	6.457	11,44	18,42	27,50/10	8.343	11,44	19,30	30,55/10	10.511	11,44	20,05
24,45/11	6.992	12,58	19,56	27,50/11	9.020	12,58	20,44	30,55/11	11.347	12,58	21,19
24,45/12	7.528	13,73	20,71	27,50/12	9.697	13,73	21,59	30,55/12	12.182	13,73	22,34
24,45/13	8.063	14,87	21,85	27,50/13	10.374	14,87	22,73	30,55/13	13.018	14,87	23,48
24,45/14	8.598	16,02	23,00	27,50/14	11.051	16,02	23,88	30,55/14	13.854	16,02	24,63
24,45/15	9.133	17,16	24,14	27,50/15	11.728	17,16	25,02	30,55/15	14.689	17,16	25,77
24,45/16	9.668	18,30	25,28	27,50/16	12.405	18,30	26,16	30,55/16	15.525	18,30	26,91
24,45/17	10.204	19,45	26,43	27,50/17	13.083	19,45	27,31	30,55/17	16.361	19,45	28,06
24,45/18	10.739	20,59	27,57	27,50/18	13.760	20,59	28,45	30,55/18	17.196	20,59	29,20
24,45/19	11.274	21,74	28,72	27,50/19	14.437	21,74	29,60	30,55/19	18.032	21,74	30,35
24,45/20	11.809	22,88	29,86	27,50/20	15.114	22,88	30,74	30,55/20	18.867	22,88	31,49

MOD. 32,08/..				MOD. 36,66/..				MOD. 41,25/..			
mod.	m3	Hv	H	mod.	m3	Hv	H	mod.	m3	Hv	H
32,08/8	9.866	9,15	18,38	36,66/14	20.570	16,01	26,53	41,25/14	26.634	16,02	27,84
32,08/9	10.788	10,30	19,52	36,66/15	21.773	17,15	27,67	41,25/15	28.157	17,16	28,98
32,08/10	11.709	11,44	20,66	36,66/16	22.977	18,30	28,82	41,25/16	29.681	18,30	30,12
32,08/11	12.630	12,58	21,80	36,66/17	24.179	19,44	29,96	41,25/17	31.204	19,45	31,27
32,08/12	13.552	13,73	22,94	36,66/18	25.382	20,58	31,10	41,25/18	32.728	20,59	32,41
32,08/13	14.473	14,87	24,08	36,66/19	26.586	21,73	32,25	41,25/19	34.251	21,74	33,56
32,08/14	15.395	16,02	25,22	36,66/20	27.789	22,87	33,39	41,25/20	35.774	22,88	34,70
32,08/15	16.316	17,16	26,36								
32,08/16	17.237	18,30	27,50								
32,08/17	18.159	19,45	28,64								
32,08/18	19.080	20,59	29,78								
32,08/19	20.602	21,74	30,92								
32,08/20	20.923	22,88	32,06								





# SMART STORAGE SOLUTIONS

## SOLUCIONES DE ALMACENAJE INTELIGENTE



SILOS AND STORAGE PLANTS  
SILOS Y PLANTAS DE ALMACENAJE



SMART STORAGE SOLUTIONS  
SOLUCIONES DE ALMACENAJE INTELIGENTE

# SMART STORAGE SOLUTIONS

## SOLUCIONES DE ALMACENAJE INTELIGENTE

SILOS AND STORAGE  
SOLUTIONS

SILOS Y PLANTAS DE  
ALMACENAJE

### Hopper silos

- Silos manufactured with galvanized steel S350GD of high elastic tolerance and with Z600 minimum coating equivalent to 600 g/m<sup>2</sup> of zinc.
- 8,8 quality dichromate high tensile bolts in all of our product range.
- Washers with neoprene to ensure a waterproof seal.
- A shallower corrugated wave to diminish the adherence of product inside.
- Galvanized reinforced exteriors, regardless of thickness, that provide excellent anti-corrosion qualities.
- Hot galvanized end support structure.
- Our method of calculating thickness is more demanding than that established by standard EUROCODIGO 1.
- Stairs and platforms comply with directive UNE-EN ISO 14122.



# SMART STORAGE SOLUTIONS

## SOLUCIONES DE ALMACENAJE INTELIGENTE

### hopper silos 45°

SILOS AND STORAGE PLANTS

SILOS Y PLANTAS DE ALMACENAJE

MOD. 4,58/.. 45°				MOD. 5,35/.. 45°				MOD. 6,11/.. 45°				MOD. 6,88/.. 45°			
mod.	m3	Hv	H	mod.	m3	Hv	H	mod.	m3	Hv	H	mod.	m3	Hv	H
4,58/4	95	4,58	8,84	5,35/4	134	4,58	9,77	6,11/4	181	4,58	10,34	6,88/4	237	4,58	10,95
4,58/5	114	5,72	9,99	5,35/5	160	5,72	10,91	6,11/5	214	5,72	11,48	6,88/5	279	5,72	12,09
4,58/6	133	6,86	11,13	5,35/6	185	6,86	12,06	6,11/6	248	6,86	12,63	6,88/6	322	6,86	13,24
4,58/7	151	8,01	12,27	5,35/7	211	8,01	13,20	6,11/7	281	8,01	13,77	6,88/7	364	8,01	14,38
4,58/8	170	9,15	13,42	5,35/8	237	9,15	14,35	6,11/8	314	9,15	14,92	6,88/8	406	9,15	15,52
4,58/9	189	10,30	14,56	5,35/9	262	10,30	15,49	6,11/9	348	10,30	16,06	6,88/9	449	10,30	16,67
4,58/10	208	11,44	15,71	5,35/10	288	11,44	16,63	6,11/10	381	11,44	17,20	6,88/10	491	11,44	17,81
4,58/11	226	12,58	16,85	5,35/11	314	12,58	17,78	6,11/11	415	12,58	18,35	6,88/11	534	12,58	18,96
4,58/12	245	13,73	17,99	5,35/12	339	13,73	18,92	6,11/12	448	13,73	19,49	6,88/12	576	13,73	20,10
4,58/13	264	14,87	19,14	5,35/13	365	14,87	20,07	6,11/13	482	14,87	20,64	6,88/13	618	14,87	21,24
4,58/14	283	16,02	20,28	5,35/14	390	16,02	21,21	6,11/14	515	16,02	21,78	6,88/14	661	16,02	22,39
4,58/15	302	17,60	21,43	5,35/15	416	17,60	22,35	6,11/15	548	17,60	22,92	6,88/15	703	17,60	23,53
4,58/16	320	18,30	22,57	5,35/16	442	18,30	23,50	6,11/16	582	18,30	24,07	6,88/16	745	18,30	24,68

MOD. 7,64/.. 45°				MOD. 8,40/.. 45°				MOD. 9,17/.. 45°				MOD. 10,70/.. 45°			
mod.	m3	Hv	H	mod.	m3	Hv	H	mod.	m3	Hv	H	mod.	m3	Hv	H
7,64/4	301	4,58	11,28	8,40/4	375	4,58	12,00	9,17/4	460	4,58	12,72	10,70/4	663	4,58	13,89
7,64/5	353	5,72	12,43	8,40/5	438	5,72	13,15	9,17/5	536	5,72	13,86	10,70/5	765	5,72	15,03
7,64/6	406	6,86	13,57	8,40/6	501	6,86	14,29	9,17/6	611	6,86	15,00	10,70/6	868	6,86	16,18
7,64/7	458	8,01	14,71	8,40/7	565	8,01	15,43	9,17/7	686	8,01	16,15	10,70/7	971	8,01	17,32
7,64/8	510	9,15	15,86	8,40/8	628	9,15	16,58	9,17/8	762	9,15	17,29	10,70/8	1073	9,15	18,47
7,64/9	562	10,30	17,00	8,40/9	691	10,30	17,72	9,17/9	837	10,30	18,44	10,70/9	1176	10,30	19,61
7,64/10	615	11,44	18,15	8,40/10	754	11,44	18,87	9,17/10	912	11,44	19,58	10,70/10	1278	11,44	20,75
7,64/11	667	12,58	19,29	8,40/11	817	12,58	20,01	9,17/11	987	12,58	20,72	10,70/11	1380	12,58	21,90
7,64/12	719	13,73	20,43	8,40/12	881	13,73	21,15	9,17/12	1063	13,73	21,87	10,70/12	1483	13,73	23,04
7,64/13	771	14,87	21,58	8,40/13	944	14,87	22,30	9,17/13	1138	14,87	23,01	10,70/13	1585	14,87	24,19
7,64/14	824	16,02	22,72	8,40/14	1007	16,02	23,44	9,17/14	1213	16,02	24,16	10,70/14	1688	16,02	25,33
7,64/15	876	17,60	23,87	8,40/15	1070	17,16	24,59	9,17/15	1289	17,60	25,30	10,70/15	1790	17,16	26,47
7,64/16	928	18,30	25,01	8,40/16	1133	18,30	25,73	9,17/16	1364	18,30	26,44	10,70/16	1893	18,30	27,62



# SMART STORAGE SOLUTIONS SOLUCIONES DE ALMACENAJE INTELIGENTE

SILOS AND STORAGE PLANTS

SILOS Y PLANTAS DE ALMACENAJE

## hopper silos 60°

MOD. 3,50/.. 60°				MOD. 4,58/.. 60°				MOD. 5,35/.. 60°				MOD. 6,11/.. 60°				MOD. 6,88/.. 60°			
mod.	m3	H(M)	H(boca)	mod.	m3	Hv	H	mod.	m3	Hv	H	mod.	m3	Hv	H	mod.	m3	Hv	H
3,50/2	31.70	6.40	0.76	4,58/4	100	4,58	9,44	5,35/4	143	4,58	10,17	6,11/4	194	4,58	10,84	6,88/4	255	4,58	12,65
3,50/3	42.02	7.60	0.76	4,58/5	119	5,72	10,59	5,35/5	168	5,72	11,31	6,11/5	227	5,72	11,98	6,88/5	297	5,72	13,79
3,50/4	52.26	8.70	0.76	4,58/6	138	6,86	11,73	5,35/6	194	6,86	12,46	6,11/6	260	6,86	13,13	6,88/6	340	6,86	14,94
3,50/5	63.70	9.80	0.76	4,58/7	157	8,01	12,87	5,35/7	220	8,01	13,60	6,11/7	294	8,01	14,27	6,88/7	382	8,01	16,08
				4,58/8	175	9,15	14,02	5,35/8	245	9,15	14,75	6,11/8	327	9,15	15,42	6,88/8	425	9,15	17,22
				4,58/9	194	10,30	15,16	5,35/9	271	10,30	15,89	6,11/9	361	10,30	16,56	6,88/9	467	10,30	18,37
				4,58/10	213	11,44	16,31	5,35/10	296	11,44	17,03	6,11/10	394	11,44	17,70	6,88/10	509	11,44	19,51
				4,58/11	232	12,58	17,45	5,35/11	322	12,58	18,18	6,11/11	427	12,58	18,85	6,88/11	552	12,58	20,66
				4,58/12	251	13,73	18,59	5,35/12	348	13,73	19,32	6,11/12	461	13,73	19,99	6,88/12	594	13,73	21,80
				4,58/13	269	14,87	19,74	5,35/13	373	14,87	20,47	6,11/13	494	14,87	21,14	6,88/13	637	14,87	22,94
				4,58/14	288	16,02	20,88	5,35/14	399	16,02	21,61	6,11/14	528	16,02	22,28	6,88/14	679	16,02	24,09
				4,58/15	307	17,60	22,03	5,35/15	425	17,60	22,75	6,11/15	561	17,60	23,42	6,88/15	721	17,60	23,23
				4,58/16	326	18,30	23,17	5,35/16	450	18,30	23,90	6,11/16	595	18,30	24,57	6,88/16	764	18,30	26,38







# SMART STORAGE SOLUTIONS SOLUCIONES DE ALMACENAJE INTELIGENTE

SILOS AND STORAGE  
PLANTS  
SILOS Y PLANTAS DE  
ALMACENAJE



SMART STORAGE SOLUTIONS SOLUCIO  
SOLUCIONES DE ALMACENAJE INTELIGENTE SMART STORAGE SOLUTIONS S

# SMART STORAGE SOLUTIONS SOLUCIONES DE ALMACENAJE INTELIGENTE

SILOS AND STORAGE  
PLANTS

SILOS Y PLANTAS DE  
ALMACENAJE

## Truck loading silo

- Structure design and manufacture for truck loading silos from 20 Tn to 300 Tn.
- Built in Z600 quality galvanized steel with high mechanical and corrosion resistance.
- Galvanized and bolted structures, with leading technology, to provide an easy and fast assembly.
- High resistance bolts to consolidate reinforce the joinings.

**We design and manufacture another types of galvanized and bolted structures.**



# SMART STORAGE SOLUTIONS

## SOLUCIONES DE ALMACENAJE INTELIGENTE

### FEATURES

model	composition	H (m)	cap. unit. (m3)	total cap. (m3)
CG 2.2	2 silos 2.50/2	10.00	16.70	33.40
CG 2.4	2 silos 2.50/4	12.30	27.15	54.30
CG 2.6	2 silos 2.50/6	13.86	38.31	76.62
CG 4.2	4 silos 2.50/4	10.00	16.70	66.80
CG 4.4	4 silos 2.50/4	12.30	27.15	108.6
CG 4.6	4 silos 2.50/6	13.86	38.31	153.2
CG 6.4	6 silos 2.50/4	12.30	27.15	162.9
CG 6.6	6 silos 2.50/6	13.86	38.31	229.8

### MOD. 3,50/.. FOR TRUCK LOADING 60° HOPPER

model	H (m)	capacity (m³)
CG 3,50/1	9.39	23.90
CG 3,50/2	10.53	34.80
CG 3,50/3	11.65	45.80
CG 3,50/4	12.80	56.80

### MOD. 4,65/.. FOR TRUCK LOADING 60° HOPPER

model	H (m)	capacity (m³)
CG 4,65/2	11.79	69.10
CG 4,65/3	12.20	88.46
CG 4,65/4	13.30	107.80
CG 4,65/5	14.44	127.00

SILOS AND STORAGE PLANTS

SILOS Y PLANTAS DE ALMACENAJE

